

Need a Mortgage in principle  
to make offers? Call us now  
for quick assistance!  
**0121 775 0101**



Do you need to sell?  
Start your journey now!  
Call us we can help.  
**0121 775 0101**



**SCAN FOR MORE INFO**  
**SIZE** - 832 Sq Ft  
**TENURE** - Freehold  
**COUNCIL TAX** - Solihull Metropolitan Borough Council - C  
**BROADBAND** - Upload Max 1000Mbps  
Download Max 1800Mbps  
**MOBILE** - EE O2  
**EPC** - 74 - C  
**PARKING** - For at least 2 Cars  
**FLOODRISK** - Very Low  
**SERVICES** - Mains  
**COVENANTS** - N/A

## CHIVINGTON CLOSE

Monkspath, B90

Nestled in the tranquil cul-de-sac of Chivington Close in Monkspath, this immaculately presented semi-detached house offers a perfect blend of modern living and comfort. Built in 1982, the property has been thoughtfully refurbished to a very high specification, ensuring that it meets the needs of contemporary lifestyles while retaining its charm.

### FEATURES

- Fully Refurbished to a High Specification Throughout
- Bright Spacious Lounge
- Stunning kitchen/Diner with Bi-Fold Doors
- Two Double Bedrooms
- Modern Family Bathroom
- Private Rear Garden with Summer House
- Driveway Parking for 2 Vehicles
- Alderbrook School Catchment
- Convenient location

Are you an investor  
interested in expanding your  
portfolio?

**Call 0121 775 0101 to provide your investment criteria for alerts.**



SCAN TO **VIEW OUR**  
**WEEKLY FILMS &**  
**SUBSCRIBE**

### Sneak Peeks

Every week, we unveil "Sneak Peeks," a feature showcasing exclusive properties before they hit Rightmove and other platforms.

### The Landlord Club

Join our Landlord Club for weekly updates on legislation, market trends, and our Letting Director's 'Investment Pick of the Week' for optimal ROI.

### HTSPMD

Tune into 'How's The Solihull Property Market Dom' weekly for a quick, insightful snapshot of the market.

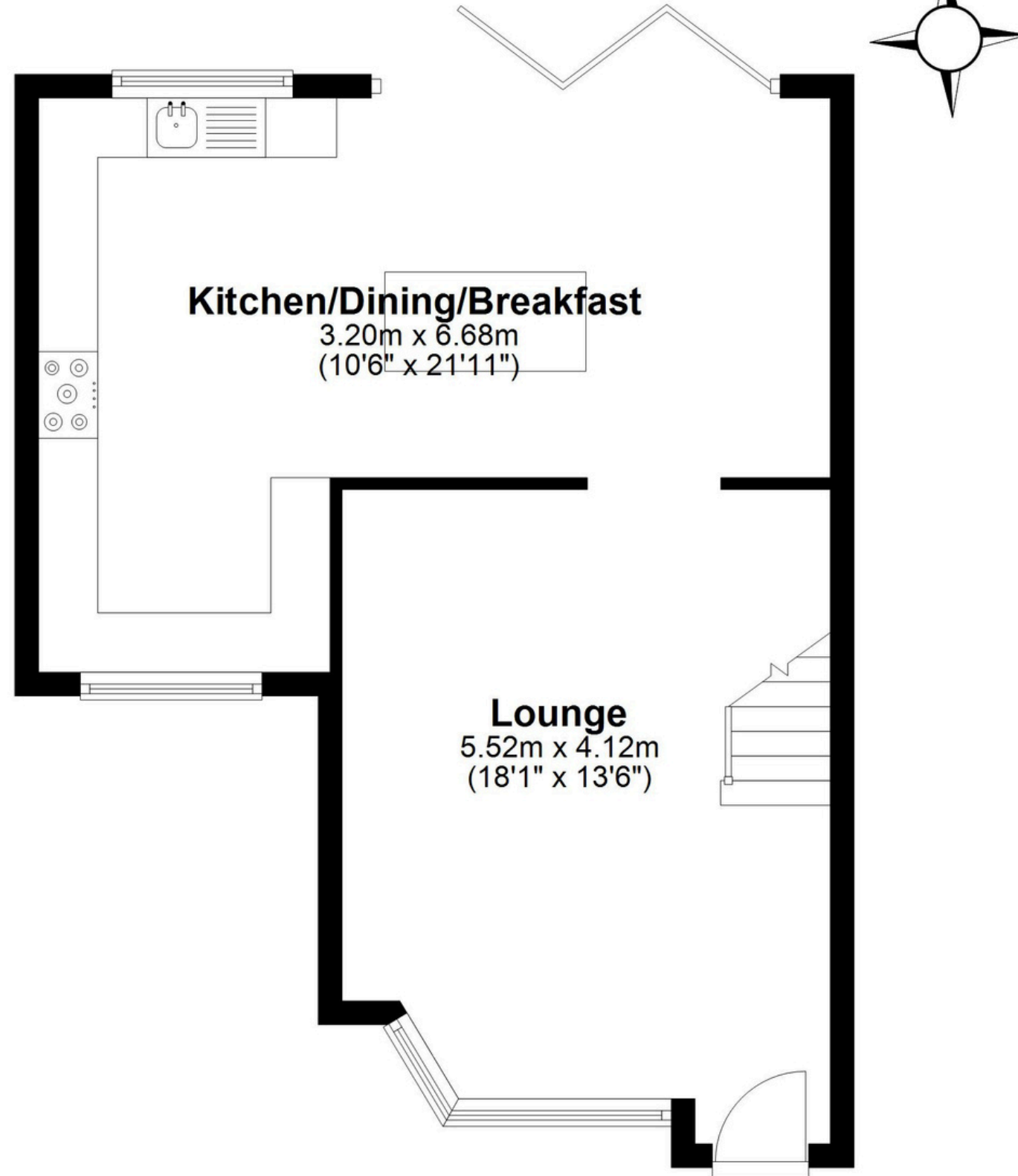
### The Mortgage Update

Get weekly insights and the best deals with our Mortgage Update, your shortcut to navigating the complex mortgage landscape confidently.



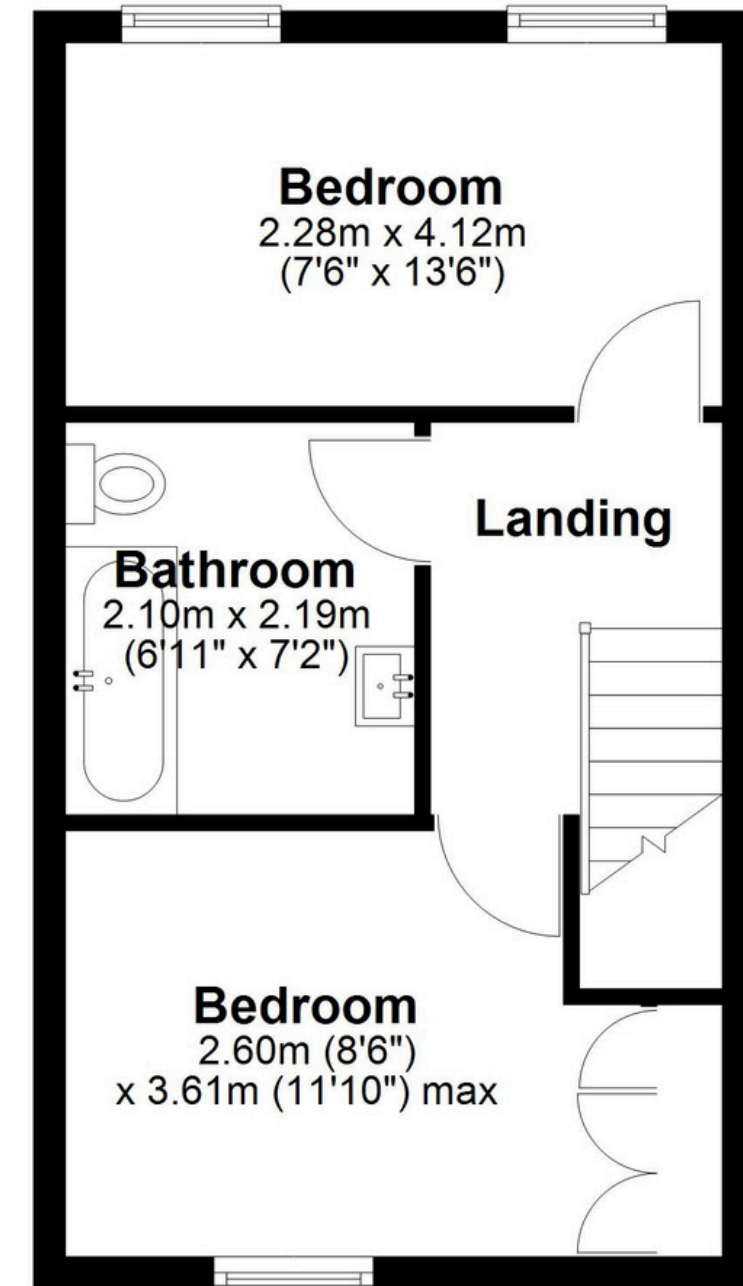
## Ground Floor

Approx. 47.0 sq. metres (505.5 sq. feet)



## First Floor

Approx. 30.3 sq. metres (326.6 sq. feet)



Total area: approx. 77.3 sq. metres (832.2 sq. feet)

This floor plan is for illustration purposes only, this is not intended to be a measured/scaled survey or comply with RICS guidelines. All measurements (including total floor area) openings, orientation and floor area are approximate. No details are guaranteed, they cannot be relied upon for any purpose and do not form part of any agreement. A party must rely upon its own inspection(s). No responsibility is taken for any error, omission, or mis-statement.

Plan produced using PlanUp.